

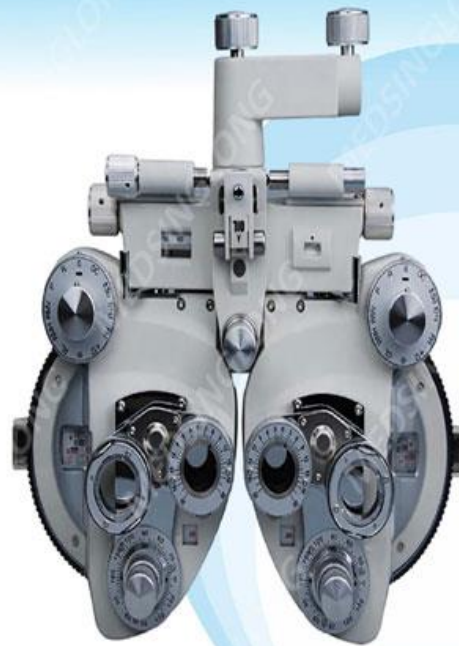
Phoropter

Phoropter

- ▶ Basic Model Basic Model with good hand touch feeling
- ▶ With 7 colors;
Better material with better processing technology
- ▶ With LED light Can work under dark environment

Quick Details

Type:	Ophthalmic Optical Equipments
Brand Name:	MSL MEDICAL
Place of Origin:	Guangdong, China (Mainland)
Name:	Manual Phoropter
Application:	Ophthalmic Optical
Color:	Black, white or by your request
Sphere Power:	Range: +16.75 to -19.00 diopters; Step: 0.25 diopters Curved: + Range: 0.00 to +4.00 diopters, Curved: - Range: 0.00 to -4.00 diopters (optional), 0.00 to -9.00 diopters with additional lens (+2.00 diopters), 0.00, 0.25 diopters
Cylinder Power:	0 to 180°; 0.25 step
Cylinder axis:	0 to 180°; 1 step
Cross Cylinder:	0 to 20°; 1 step
Rotary Prism:	0 to 20°; 1 step
P.D. adjustment:	50-75mm, 1mm at a step
Standard Accessory lenses:	Two 0.12D and 2.00 D cylinder lenses, two plano lenses for testing front optical
Standard Accessories:	1 rear joint cap with 5/16" and 1/4" and marking that dust cover, like shield, accessory like the lenses
Net Weight:	Approx 4.5 kg
Certificate:	ISO 9001
Dimensions:	318 x 185 x 253 (mm)
Warranty:	1 year



MSLPHP01

Ophthalmology Refractometer

Vision Screener

Vision Screener

▶ The patients who need to be corrected such as myopia, hyperopia, astigmatism, strabismus, pupil distance deviation, fixation asymmetry and refractive aberration can be screened by the refractive screening instrument, and further prevention and control measures can be taken.



MSLYZ07

Ophthalmology Refractometer

Vision Screener

Vision Screener

- ▶ Objective and accurate refractive assessment
- ▶ Ideal for challenging patients such as infants, disabled patient
- ▶ Revolutionary design brings superior user experience

EASY OPERATION THAT YOU CAN MASTER IN SECONDS



Step 1
Simply put the screener against the forehead



Step 2
Centre the cross on the pupil



Step 3
Save, print or share the report



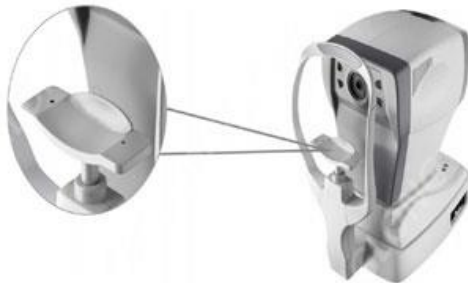
MSLHA0109

Ophthalmology Refractometer

Auto Refractometer

Auto Refractometer

- ▶ Bigger, better monitor and icon-display menu for easier operation and settings.
- ▶ Amotorized joystick with auto vertical tracking Amotorized joystick with auto vertical tracking mode is adopted, so operation is easier.
- ▶ With high quality of hexagon prism and highly sensitive CCD, it provides unmatched accuracy and reliability.
- ▶ Just move, it will automatically focus the eye and get the value.



MSLFA65

Ophthalmology Refractometer

Auto Refractometer

Auto Refractometer

- ▶ keratometry and refractometry mode select
- ▶ Auto / manual focus function
- ▶ 5.7" color TFT LCD screen
- ▶ Auto PD measurement
- ▶ Faster and more accurate measurement
- ▶ More broad measurement range of Min.
- ▶ Pupil size to Φ 2.0mm



- Convenient user menu setting
- Easy to operate, one-hand control
- Auto log chart



MSLFA60A

Ophthalmology Refractometer

Auto Refractometer

Auto Refractometer

- ▶ Bigger, better monitor and icon-display menu for easier operation and setting.
- ▶ With high quality of hexagon prism and highly sensitive CCD, it provides unmatched accuracy and reliability.
- ▶ Just move, it will automatically focus the eye and get the value.



MSLRM03

Ophthalmology Refractometer

Slit Lamp

Slit Lamp

- ▶ Slit Lamps provide rotational drums for doctors to switch between different magnifications. The scales are engraved by laser and durable for long time use.
- ▶ Uniquely designed optical system makes the slit lamp be able to project very sharp and homogeneous slits and apertures. Doctors can obtain closer observation through our slit lamps and see all kinds of pathologies clearly. As a result, the diagnosis becomes easier for the doctors who can dedicate more time and energy to the treatment for the patients.



MSLSL09

Slit Lamp

Slit Lamp

Slit Lamp

- ▶ High Sensitivity Professional Objective Lens;
- ▶ All Lens Have Been Carried out Moisture Proof, Mould Proof and Coating Processing for Many Times, Which Prove Its Good Optic Performance in Different Weather Condition;
- ▶ German Industrial Bulb, High Brightness without Harsh, Quick Heat Dispersion;
- ▶ International Standard Accessory Interface Which Can Connect Kinds of Ocular Posterior Segment Laser Adapter and Goldman Tonometer;
- ▶ Digital Upgrading Interface: Can Upgrade to Digital Slit Lamp;



Five-step drum zoom



MSL-2ER

Slit Lamp

Ophthalmic Operating Microscope

Ophthalmic operating microscope

- ▶ All the lenses are multi-coated, mildewproof and anti-reflective.
- ▶ Optional objectives: f250/f300/f350f/f400.
- ▶ Column stand can be refitted to holding stand. It can also be customized according to various operation requirements.

Big Objective Lens	Total Magnifications	Diameter of Field(mm)
f250mm	4.2X、6.4X、9.6X	φ47.5, φ31, φ21
f300mm	3.5X、5.4 X、8X	φ57, φ38, φ25
f350mm	3X、4.8X、6.8X	φ67, φ44, φ30
f400mm	3X、4X、6X	φ76, φ50, φ34



MSL20P5

Operating microscope

Ophthalmic Operating Microscope

Ophthalmic operating microscope

- ▶ Wide visual angle, clear imageries
- ▶ Coaxial cold light source bright and clear in depth
- ▶ Hand-mirror provided for two persons to operate together
- ▶ Slight adjusting of positions by foot light and handy convenient for operation and carrying about.

	Operation Distance(mm)	Magnification (X)	Field of Visual(mm)
Large Objective Lens $f' = 200$	192.74	10	27.5
Assist Scope $f' = 200$	249.84	4	52



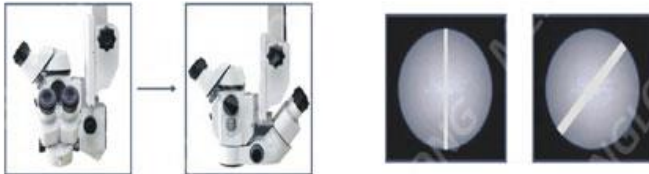
MSLSX12

Operating microscope

Ophthalmic Operating Microscope

Ophthalmic operating microscope

- ▶ Assistant microscope can be rotated to opponent microscope.
- ▶ Internal beam splitter can be connected with teaching tube and CCD system.
- ▶ Equipped with three different objective lenses (£200/£250/£300) and applicable in ophthalmic surgery, orthopedic surgery and hand surgery.
- ▶ Oblique illumination can also be used as slit illumination and slit width is adjustable.



MSL20T4

Operating microscope

Ophthalmic Yag Laser

Ophthalmic YAG laser

- ▶ Reliable Partner for Iridotomy & Capsulotomy
- ▶ The laser beam energy disperses rapidly in front of and behind the focal point so as to avoid injuries to tissues outside the focal point resulting from laser beam. When the dispersed beam reaches fundus oculi, its power density is below one ten thousandth of that at the focal point and the action time is only a few nanoseconds; so under normal circumstances it is not easy to cause injury to fundus oculi thus ensured the safety of surgery.



MSLMD920

Fundus laser

Applanation Tonometer

Applanation Tonometer

- ▶ With years of tests and clinical applications, Goldmann has been proved to be the the gold standard for tonometry measurement. Based on the proven evidence, MediWorks T170 tonometer applied Goldmann principle in the design and manufacture. With precision manufacturing process, MediWorks applanation tonometer offers accurate and consistent measurements which give a clear picture of patients' IOP situation to the doctors.



Tonometer

Rebound Tonometer

Rebound Tonometer

- ▶ The rebound intraocular pressure MSLYZ06 has two working modes, vertical and horizontal, and can output print data wirelessly. Coming intraocular pressure. It has the advantages of high measurement accuracy, portability, no anesthesia, and no cross-infection.



MSLYZ06

Tonometer

Non Contact Tonometer

Non contact tonometer

- ▶ Auto 3-D positioning of xyz results in precise and reliable measurement
- ▶ Full-auto measurement for both right and left eye data without manual switch
- ▶ Easy to operate the tonometer with color touch monitor
- ▶ Stable data of IOP through soft air measurement
- ▶ To compensate corneal thickness measurement of IOP



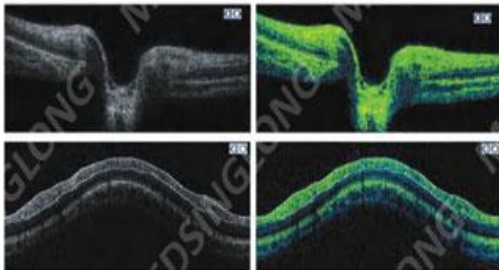
MSLAT100

Tonometer

Optical Coherence Tomography

Optical Coherence Tomography

- ▶ Modular design increases flexibility, reusability and maintainability. We can provide personalized design according to the customers' needs.
- ▶ With the powerful software, MSLOCT01 has clear, easy-to-use interface and supports multi-language.
- ▶ Anterior segment with optional modules, MSLOCT01 be able to observe and analyze the anterior segment.



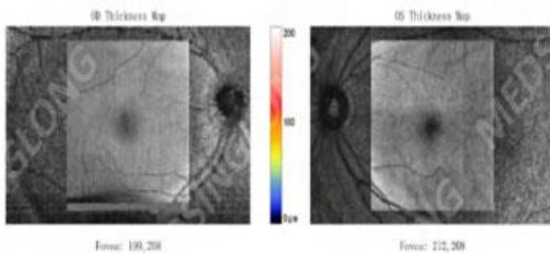
MSLOCT01

Optical Coherence Tomography

Optical Coherence Tomography

Optical Coherence Tomography

- ▶ Everything is inside this compact body. No external computer is needed. Plug in the power cable, then you are ready to go.
- ▶ Data acquisition and processing are accomplished by the internal computer. The data can be transported via ethernet or external harddrive. Peripheral devices, such as keyboard or printer, can be connected to the computer ports.
- ▶ No complex connection or setup. Compact body can fit in even small space.



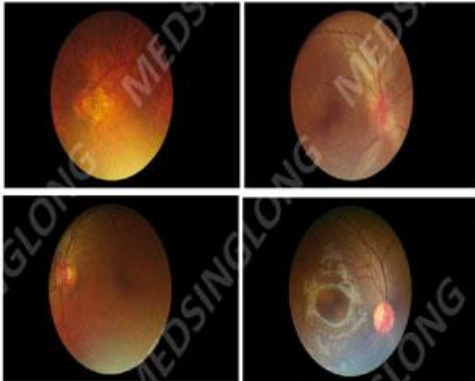
MSLOCT08

Optical Coherence Tomography

Handheld Fundus Camera

Handheld fundus camera

- ▶ High definition and stable image
- ▶ Non-mydratic and large field of view
- ▶ Easy one-handed operation and excellent portability
- ▶ Large data service and a variety of image acquisition mode



MSLHA03

Fundus camera

Digital Portable B/W Ultrasound Machine

Digital Portable B/W Ultrasound Machine

- ▶ One hand operation with Android system
- ▶ Support data storage, reading, wireless transfer, wireless printing
- ▶ DICOM interface
- ▶ 4G networks
- ▶ Work independently without additional computer or mobile device
- ▶ Integrated design only 560g



MSLHA07

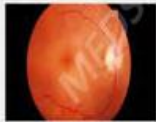
Portable B/W Ultrasound Machine (for Human)

Handheld Fundus Camera

Handheld fundus camera

- ▶ At top industry standard, the patients can be satisfied for their fundus images without mydriasis so that the efficiency is improved.
- ▶ Double dot auxiliary focus makes it easy to use.
- ▶ Canon's EOS image acquisition system with 18 megapixels is able to display a clear fundus image

• Super-resolution imaging



▶ Canon's EOS image acquisition system with 18 megapixels is able to display a clear fundus image

• 3.3mm pupil photo ability



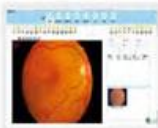
▶ At top industry standard, the patients can be satisfied for their fundus images without mydriasis so that the efficiency is improved.

• Quick and easy operation procedure



▶ double dot alignment, easy and simple

• Comprehensive image management software



▶ It can reserve, analyze and processing images, such as adjustment for amplification, saturation and contrast, ROI, measurement, mark and comparison, etc... It's convenient for doctors to study by its abundant case photos.



MSLAFC04

Fundus camera

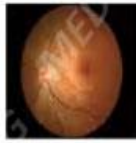
Fundus Camera

Fundus Camera

- ▶ When the positional relation between the instrument body and the patient's eye is proper for photography, the instrument automatically takes a picture.
- ▶ For different eyes, the flash level is automatically adjusted with the fundus live image.
- ▶ Minimal pupil size 3.3mm, Suitable for wider population



Captured by a skilled technician



Auto capture



Constant level



Adjusted level



MSLAFC06

Fundus camera

Eyepiece

Eyepiece

- ▶ Retinal Lenses are made of high transmittance glass and precision double aspheric designs that yield an extremely wide field of view and sharp image.
- ▶ Aspheric Lenses Imported Germany glass with multiple coatings provides clear image and broad vision.



78D

Eyepiece

Eyepiece

Eyepiece

- ▶ Retinal Lenses are made of high transmittance glass and precision double aspheric designs that yield an extremely wide field of view and sharp image.
- ▶ Aspheric Lenses Imported Germany glass with multiple coatings provides clear image and broad vision.



90D

Eyepiece

Eyepiece

Eyepiece

- ▶ Retinal Lenses are made of high transmittance glass and precision double aspheric designs that yield an extremely wide field of view and sharp image.
- ▶ Aspheric Lenses Imported Germany glass with multiple coatings provides clear image and broad vision.



20D

Eyepiece

Projection Perimeter

Projection perimeter

- ▶ Comprehensive real-time monitoring, heiji-krakau physiological blind spot monitoring, gaze tracking/head position tracking, automatic measurement of pupil diameter, reduce the impact of pupil effect on visual field detection.
- ▶ Personalized design, accurate clinical analysis, accurate and rapid examination strategy.
- ▶ A variety of classic test procedures, including international standard six report analysis .



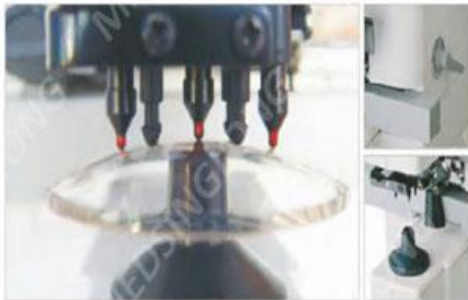
MSLB1001

Projection perimeter

Auto Lensmeter

Auto Lensmeter

- ▶ You just touch the screen to finish your measurement, the operation could be easier and more convenient.
- ▶ Easy to use with recognizable icons. The MSLJD20 series provide a user-friendly graphical interface for an immediate understanding.
- ▶ A graph helps the operator to improve accuracy and speed in A graph helps the operator to improve accuracy and speed in



MSLJD20

Lensmeter

Auto Lensmeter

Auto Lensmeter

- ▶ Tilt color screen provides you with clear view from any position such as sitting and standing.
- ▶ You just touch the screen to finish your measurement, the operation could be easier and more convenient.



Type of equipment	
MSL/JD26B	
Slide	0-220.0 (0.0/0.1/0.2) step
Slide	0-45.0 (0.0/0.5/1.0/2.0) step
Axis	0°-180° (1°) step
All	0-25.0 (0.0/0.5/1.0/2.0) step
Prism degree	0-35.0 (0.5/1.0/2.0) step
Measurement mode	
Circle	4, 8, 16, ...
Prism	3, 5, 9, ...
Contact lens	SD/Soft
Measuring mode	
Specifications	
Quantity of lens	0-20 (200)
PS	40-1000.0 (mm) step
Speed of movement	0-30
Display	MSL/JD26B: 1280x800 (1280x800) 5.0" TFT LCD
Printer	Optional Printer
Dimension	220 (mm) x 145 (mm) x 170 (mm)
Package	110 (mm) x 120 (mm) x 90 (mm)
Weight	~1.5kg
Power supply	100-240V 50/60Hz



MSL/JD26B

Lensmeter

Auto Lensmeter

Auto Lensmeter

- ▶ Concise and compact design saves installation space.
- ▶ Tilting screen is convenient for users to observe.
- ▶ for users to observe. interface makes operation more easier.



Technical parameters	
MSLLM01	
Measuring Range	
Spherical degree :	-25m ⁻¹ ~+25m ⁻¹
Cylindrical degree :	-9.99m ⁻¹ ~+9.99m ⁻¹
Under plus degree :	-9.99m ⁻¹ ~+9.99m ⁻¹
Axis for astigmatism :	0°~180°
Prism base angle :	0°~360°
Prism degree :	Horizontal direction:15°, Vertical direction:20°
Lens size :	Ø7~113mm
Lens thickness :	≤20mm
UV transmissivity :	Yes
Range of PD :	30~100mm
Range of PH :	4~55mm
Power :	220V 25VA
Power adapter :	AC110~220V
Size :	203mm X 240mm X 480mm



MSLLM01

Lensmeter

Ophthalmoscope

Ophthalmoscope

- ▶ LED cold light source. It is durable enough with the designed service life of 100000 hours.
- ▶ Low heat benefits from the cold light source.
- ▶ Imported bulb maintains 3200K color temperature for long time. The illumination is soft and more similar with sunlight.
- ▶ Even light spot and sharp observed fundus image.
- ▶ Soft rubber around the eyeholes protect eyes and stabilize the ophthalmoscope.

Illumination Form	Large Spot, Small Spot, Slit, Net, Red Free
Diopter Compensation	0 ±1 ±2 ±3 ±4 ±5 ±6 ±8 ±10 +12 ±15 ±20 -25 -35D
Illumination Source	3.5V/1W LED Bulb
Input Voltage	AC220±22V/50Hz±1Hz. AC110V±11V/60Hz±1Hz



MSL6H

Ophthalmoscope

Fiber Optic Otoscope

Fiber Optic Otoscope

- ▶ Elegant appearance.
- ▶ It is convenient for mobile inspection. Both common dry.
- ▶ Cell and rechargeable battery power are applicable.

Illumination Form	Large Spot, Middle Spot, Small Spot, Red Free
Diopter Compensation	0 ±1 ±2 ±3 ±4 ±5 ±6 ±8 ±10 ±12 ±15 ±20 -25 -35D
Illumination Source	2.6V/0.78W. Incandescent Bulb
Power	2# Alkalinescent battery, rechargeable battery



MSL-11

Ophthalmoscope

Binocular Indirect Ophthalmoscope

Binocular Indirect Ophthalmoscope

- ▶ Advanced optical design avoids the glistening and provides the broad filed.
- ▶ Super-light one piece design.It's soft and comfortable enough to wear with the adjustable height and width.
- ▶ Equipped with + 20D aspheric lens which provides clear image.
- ▶ Two types for option:A.C.type or charging type.

Visual Angle	45° ± 5°
Pupil Distance	52mm-74mm
Weight	≤320g (the head frame) /610g
Adjustable Range of the Head Frame	Head Perimeter:530mm-630mm
Depth	85mm-125mm
Illimination Source	6V/10W halogen bulb / 7.4V/3W LED bulb
Input Voltage	AC220±22V/50Hz±1Hz, AC110V±11V/60Hz±1Hz



MSL25B

Ophthalmoscope

Handheld Keratometer

Handheld Keratometer

- ▶ Electronic and optical integration, mainly used for measuring the corneal curvature radius and diopter, wireless data output.
- ▶ Measurement deviation of the main meridian axial position: $\pm 2^\circ$



MSLYZ05

Handheld Keratometer

Ophthalmology Combined Table

Ophthalmology Combined Table

- ▶ Luxurious design and graceful structure
- ▶ Tabletop can rotate 90°
- ▶ Small slidable table for refractor
- ▶ Motorized Chair go up/down smoothly with low noise
- ▶ Arm can swing to left/right to change position of phoropter
- ▶ leg's protecting device

总长度	890x500mm	总宽度	1400-1720mm
桌面高度	410x258mm	桌面深度	320mm
桌面厚度	420mm	桌面宽度	155mm
桌面长度	1650x1200x1750mm	桌面高度	820mm
桌面宽度	540x378x60mm	桌面深度	160mm
桌面角度	90°	电压	AC110V/220(60/50Hz)



MSL780B

Ophthalmology Combined Table

Tril Lens Set

Tril Lens Set

- ▶ Metal rim/handle, high-grade stainless steel handle, shiny Gold/Silver color safe and nice aluminum case
- ▶ 266 pcs tril lenses
- ▶ Lens diameter 26mm (38mm outer)
- ▶ Very good quality, high classics



MSLYJ01

Lcd

Lcd Visual Acuity Chart

Lcd Visual Acuity Chart

- ▶ Delicate design high , definition display: This instrument is designed with professional video and audio multimedia processing technology, with rapid response and convenient operation.
- ▶ Convenient and quick installation: simply hang or place on solid surface, easy to maintenance.
- ▶ 3D-type instrument is designed with stereo polarization specially used for examine of stereo vision and binocular balance



MSLVS05

Lcd

Auto Chart Projector

Auto Chart Projector

- ▶ 2m to 4m adjustable use distance, which reduce operation room largely.
- ▶ Inner projecting display, outside ray permitted; more accurately operating.
- ▶ LCD remoter control, operating very visual and convenient
- ▶ Even if to be kept at 2m distances, also realizes vision effect for projecting just like at 4m
- ▶ The selection of charts has been specifically arranged to meet the needs of each market region.

Specification of MSLCP60 Auto Chart Projector	
Projection Distance	3m-6m
Charts	39 kinds
Masking fuction	No mask, horizontal line mask, Vertical line mask, Single letter
Fatening Fuction	Red/Green filter
Chart changeover speed	Average of 0.2 seconds or less
Chart size	336(W)mm*225(H)mm (at the distance of 5m)
Lamp	LED
Weight	5KG



MSLCP60

Projector

Lens Edger

Lens Edger

- ▶ Optical path without parallax original shape scanning more accurate
- ▶ Stable main machine , easy operation convenient maintenance



Many different lens material can be satisfied.:(PC, HI, HR, Glass)



Have auto-bevel-setting and grooving(You can choose multiple position of bevel and grooving position)



Grooving Safe Chamfer



MSLALE04

Lens Edger

Lens Edger

Lens Edger

- ▶ Beveling polishing function
- ▶ Pressurizing automatically
- ▶ PC auto edger
- ▶ The 3rd generation mainboard

PC wheel size	100x16mm
Glass wheel size	100x14mm
V groove size	100x23mm
Bevel polishing wheel size	100x19mm
available lens range	22mm-100mm
the lens material	CR glass,pc
Processing tye	pointy edges, platband, flat and bevel polishing
Voltage	200-240v, Frequency: 50Hz
Power	500W
Weight	50kg
Size	530Lx500Wx400H (mm)



MSLALE01

Lens Edger

Medical Headlight

Better Vision
Better Care

Better Vision
Better Care



True and Natural Color
High Light Intensity

- HIGH BRIGHTNESS
- LONG WORKING HOURS
- NATURAL LIGHT
- UNIFORM SPOT
- HIGH STABILITY

DESIGNED BY HAMPTON SURGICAL AND TRULIFE
MANUFACTURED BY MEDICAL PRODUCTS AND SERVICES

PATENT DESIGN

High brightness solution

Constant current output
Constant current output current remains unchanged during operation, which is easy to wear for a long time.

True and Natural color
Equivalent to 10000Lux at 20cm working distance. Can meet all kinds of surgical light requirements.

PRODUCT MODEL

PARAMETERS TABLE:

Model	Wearing mode
CLED-J090	Sports
CLED-C390	Classic
CLED-K090	Headband



Binocular Loupes

Better Vision
Better Care

Better Vision
Better Care

PATENT DESIGN



Ergonomic
Suitable for long time operation
Multi-dimensional rotation



6 gears for
6 levels professional coating

Large Depth of View
Large Field of View



PRODUCT MODEL

PARAMETERS TABLE

Model	Magnifying multiple	Wearing mode
CLM2 SX 340E		Flip-up
CLM2 SX 420E		Flip-up
CLM2 SX 430E		Flip-up
CLM2 SX 480E		Flip-up
CLM2 SX 500E		Flip-up
CLM2 SX 520E		Flip-up
CLM2 SX 540E		Sports
CLM2 SX 420E	2.5X	Sports
CLM2 SX 430E		Sports
CLM2 SX 480E		Sports
CLM2 SX 500E		Sports
CLM2 SX 520E		Sports
CLM2 SX 340H		Headband
CLM2 SX 420K		Headband
CLM2 SX 420H		Headband
CLM2 SX 480K		Headband
CLM2 SX 500K		Headband
CLM2 SX 520K		Headband
TL2 SX 340E		TTL
TL2 SX 420E		TTL
TL2 SX 480E		TTL
TL2 SX 500E		TTL
CLM3 SX 420E		Flip-up
CLM3 SX 420E	3.0X	Sports
CLM3 SX 420K		Headband
CLM3 SX 420K	3.5X	Headband



⊗
GREAT DEPTH OF FIELD AND
WIDE FIELD OF VIEW

⊕
LOW DIOPTRIC
GLASS LINE

⊖
HIGH DEPTH OF FIELD AND
LOW DISTORTION

©2016 HS SURGICAL. ALL RIGHTS RESERVED.
REGISTERED TRADE MARK IN THE UK

Medical Headlight

Better Vision
Better Care

Better Vision
Better Care



True and Natural Color
High Light Intensity

- HIGH BRIGHTNESS
- LONG WORKING HOURS
- NATURAL LIGHT
- UNIFORM SPOT
- HIGH STABILITY

DESIGNED TO BE COMING A SUPPORT TO ALL TYPES
POWERED MEDICAL PRODUCTS AND TOOLS

PATENT DESIGN



High brightness adjustment

Constant current output

Correct current output current remains unchanged during operation, which is easy to use for a long time

True and natural color

Balance up to 10000Lux at 20cm working distance
Can meet all sorts of surgical light requirements

PRODUCT MODEL

PARAMETERS TABLE

Model	Wearing mode
CLED-0800	Sports
CLED-C300	Classic
CLED-K300	Headband

